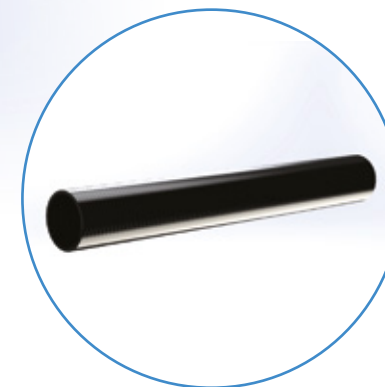
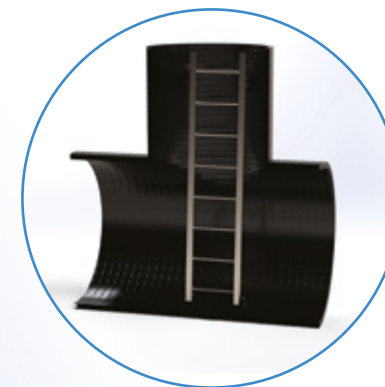
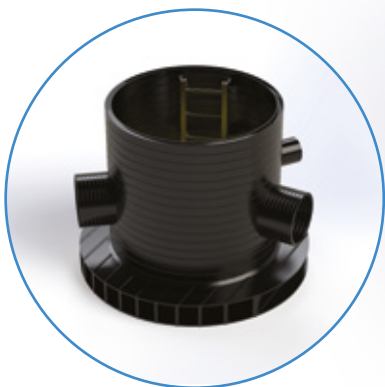
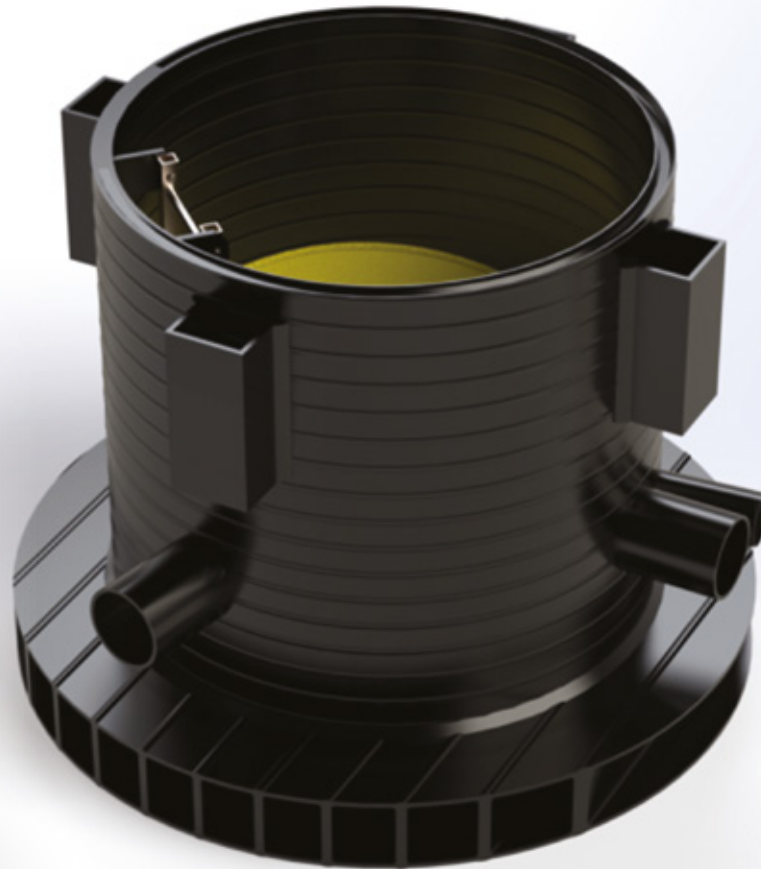
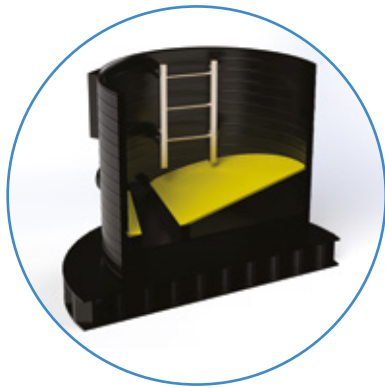


- Available in sizes from 400mm ID to 3.5m ID. (Refer to chapter 3)
- Fully compliant with BS EN 13476
- Value engineered for each and every project
- Available as structural Wehopanel
- Gravity and low pressure applications
- Available in lengths from 300mm to 30m in one piece
- Lightweight for superfast installation
- Variety of jointing systems to meet specific project requirements
- Totally resistant to Hydrogen Sulphide – H<sub>2</sub>S
- Excellent abrasion resistance
- Ultralow roughness coefficient. Ks value – 0.03
- Resulting in very low maintenance



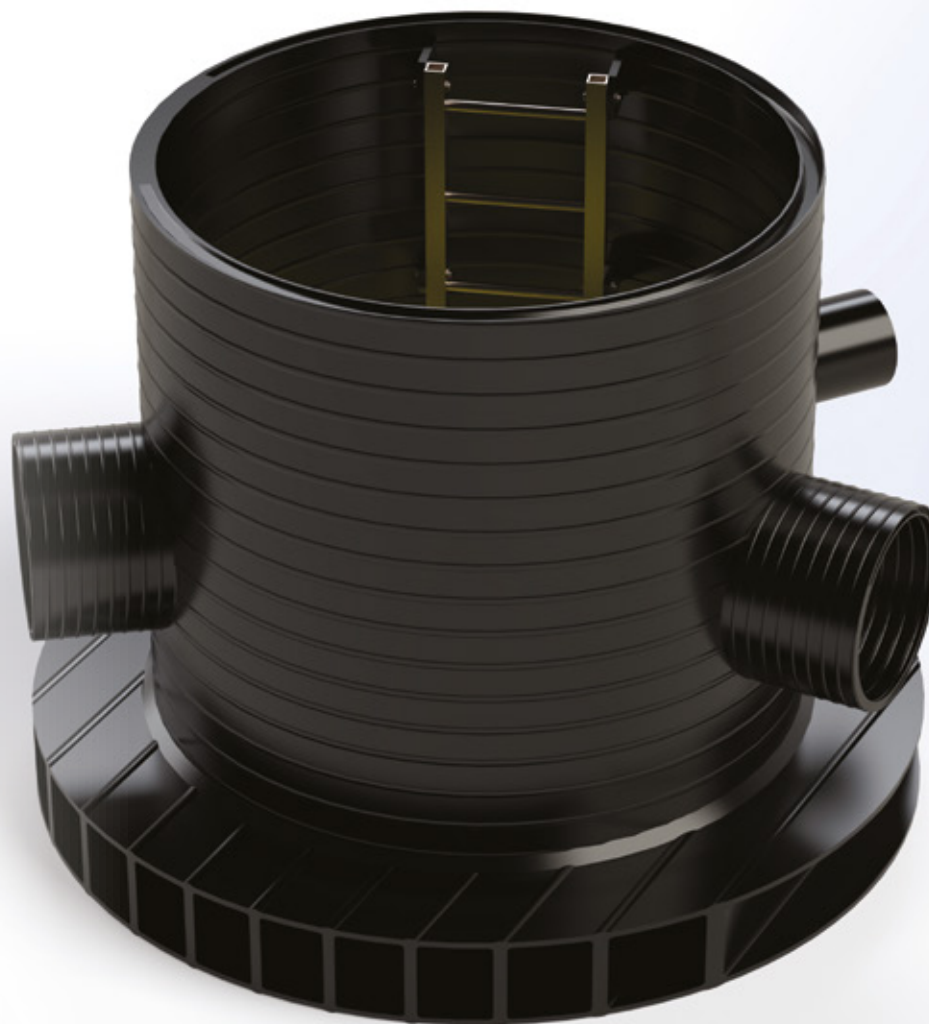
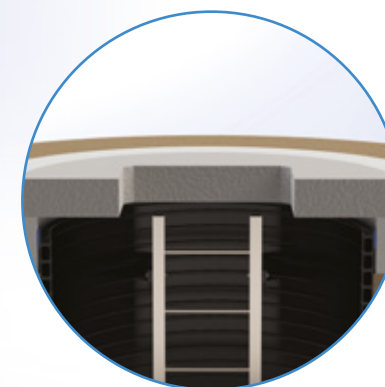
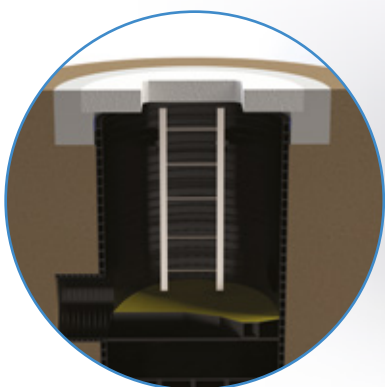
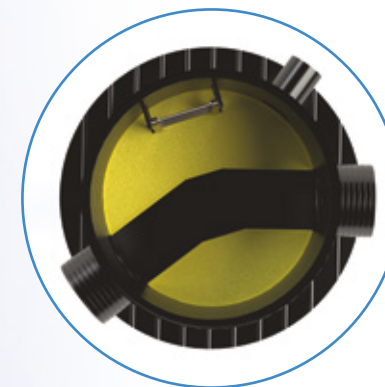
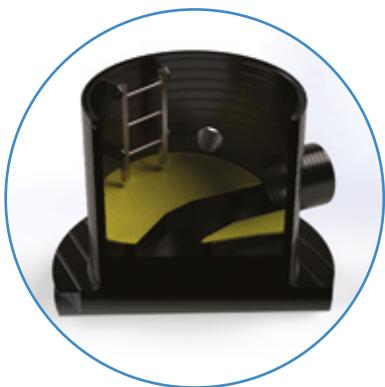


- Major savings on programme
- Available in sizes 900mm to 3500mm
- Designed to resist groundwater pressures
- Available in any orientation
- Fully tested, factory built components
- Complete with lifting points
- Yellow anti-slip benching
- Concrete surround not required
- Rocker pipes not required
- Ready to use immediately upon delivery
- Totally resistant to Hydrogen Sulphide – H<sub>2</sub>S
- Lighter plant and less labour
- Best abrasion resistance
- Better flow properties
- Low maintenance
- Designed in line with Sewers for Adoption and specific water company requirements for S104 adoption\*

\* All UK Water Companies have differing specifications and requirements. Please contact Asset International Limited for specific advice.



**WEHOLITE**



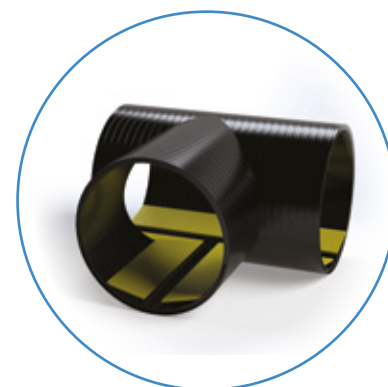
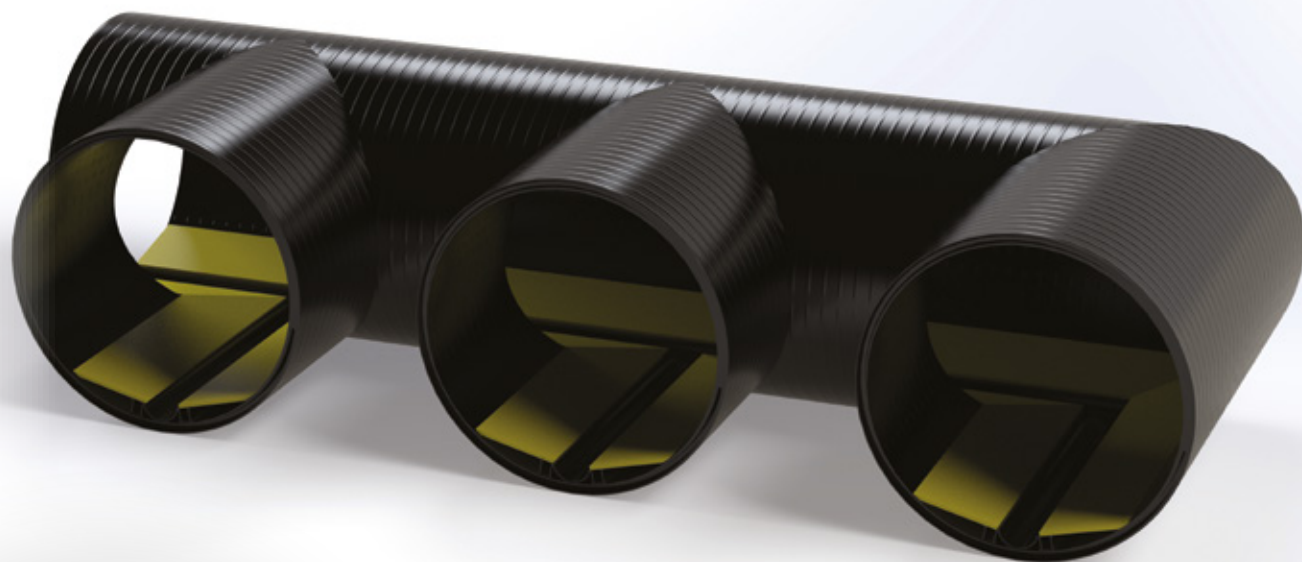
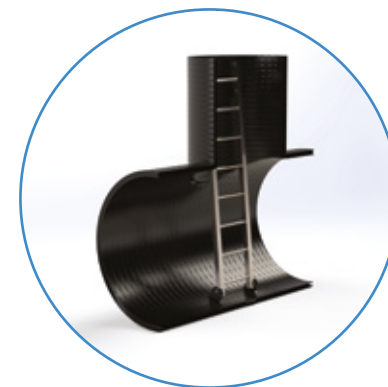


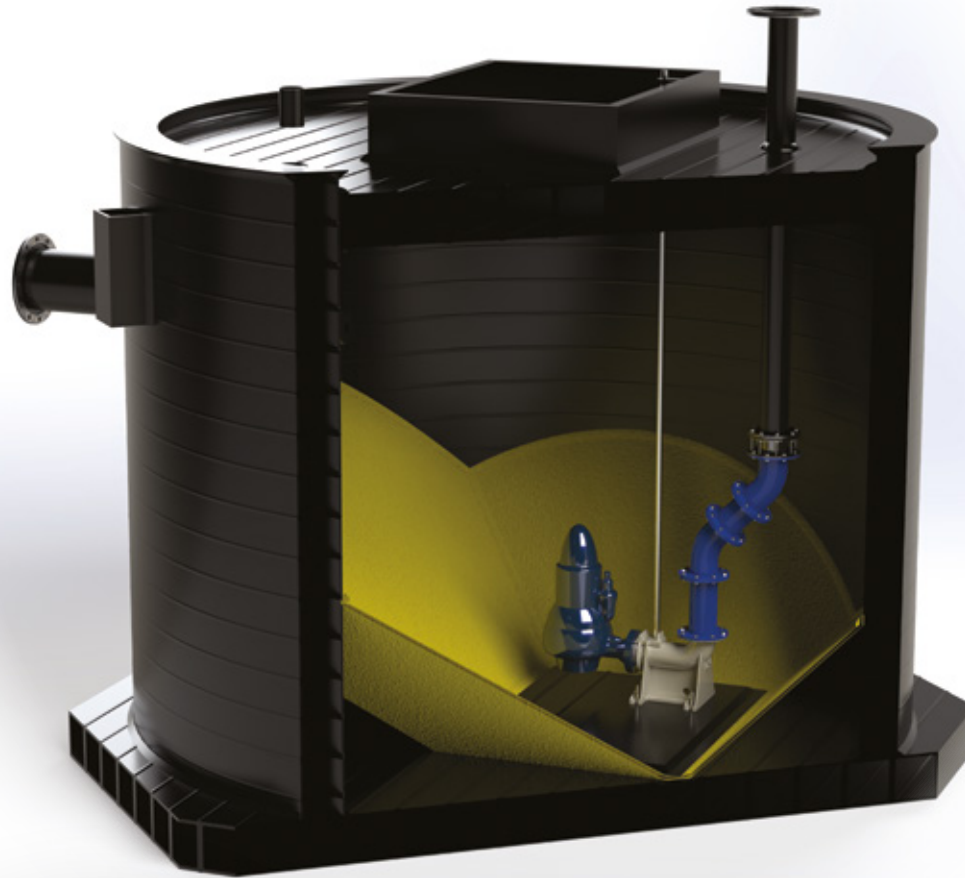
- Available for both online and offline attenuation
- For use with storm water, sewage and CSO
- Full structural design package available
- Designed to resist groundwater pressures
- Spatial optimisation on each and every project
- Concrete surround not required
- Major programme savings
- Fully tested, factory built components
- DWF channel with anti-slip flooring available
- Pre-installation meetings and site services
- Designed in line with Sewers for Adoption and/or specific water company requirements for S104 adoption\*

\* All UK Water Companies have differing specifications and requirements. Please contact Asset International Limited for specific advice.



**WEHOLITE**

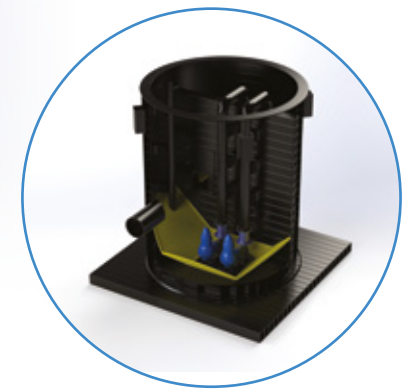
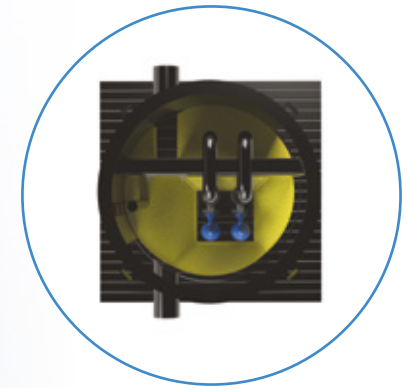




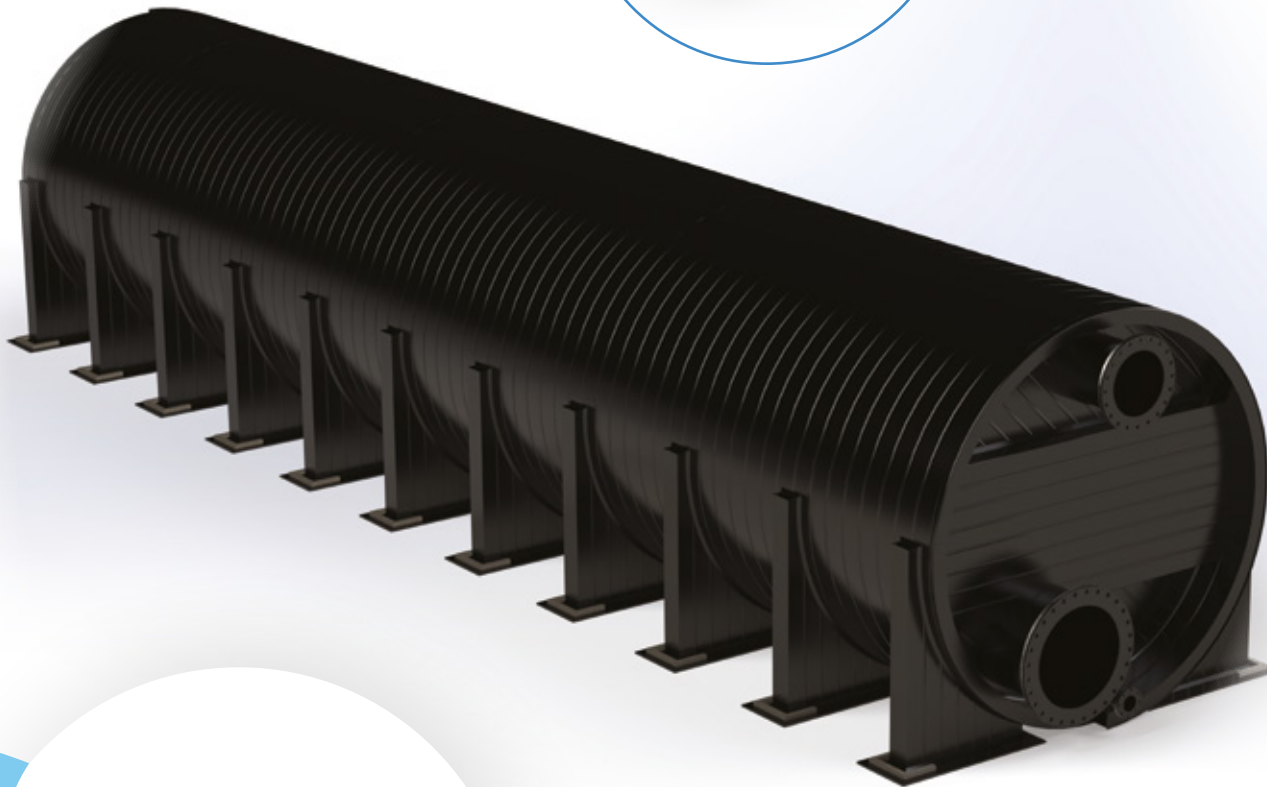
- Major savings on programme
- Available in sizes 900mm to 3500mm
- Designed to meet project specific requirements using standard components
- Designed to resist groundwater pressures
- Fully tested, factory built components
- Full structural design package available
- Concrete surround not required
- Rocker pipes not required
- Yellow anti-slip benching
- Ready to use immediately
- Totally resistant to Hydrogen Sulphide – H<sub>2</sub>S
- Lighter plant and less labour
- Best abrasion resistance
- Better flow properties
- Low maintenance
- Designed in line with Sewers for Adoption and specific water company requirements for S104 adoption\*

\* All UK Water Companies have differing specifications and requirements. Please contact Asset International Limited for specific advice.





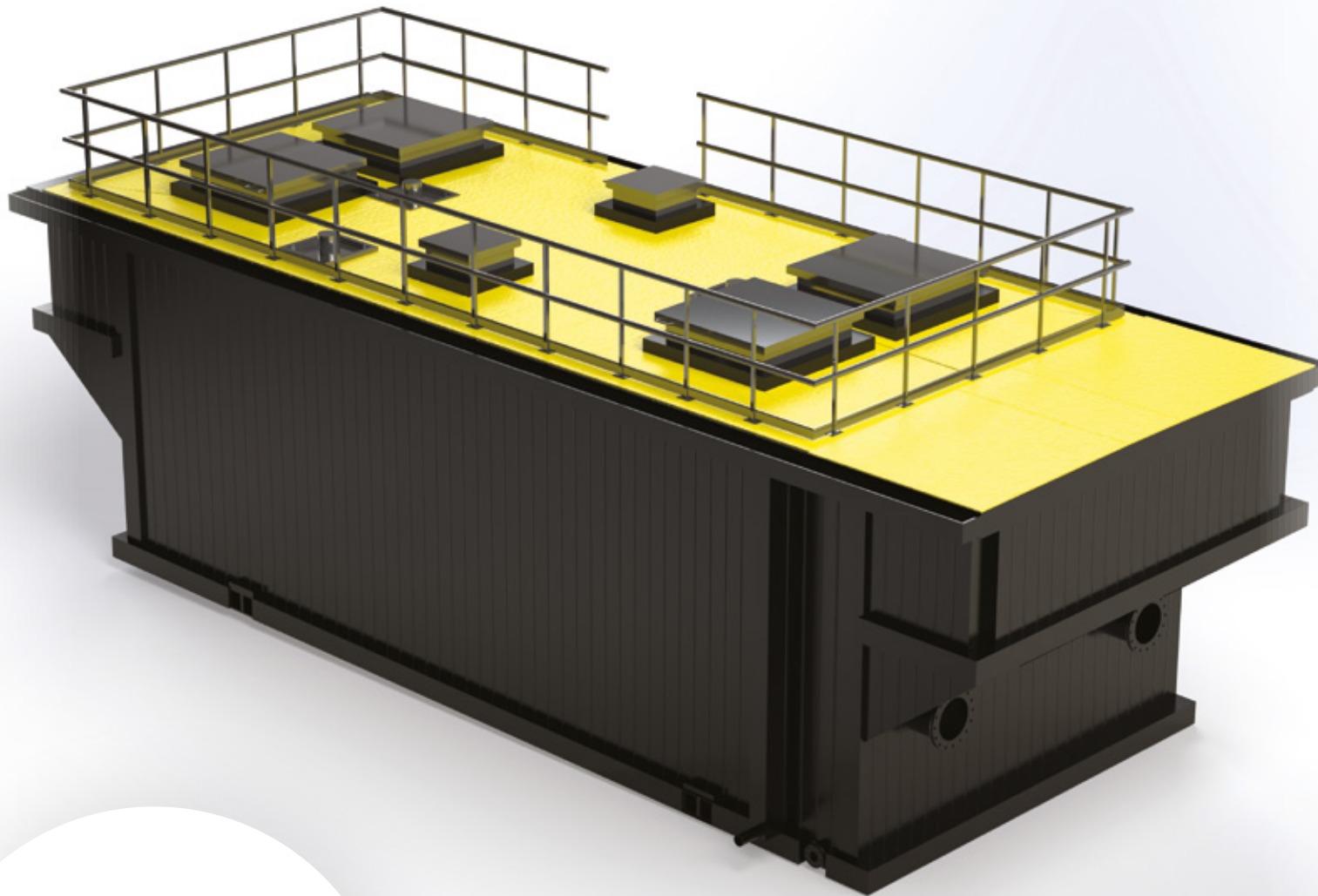


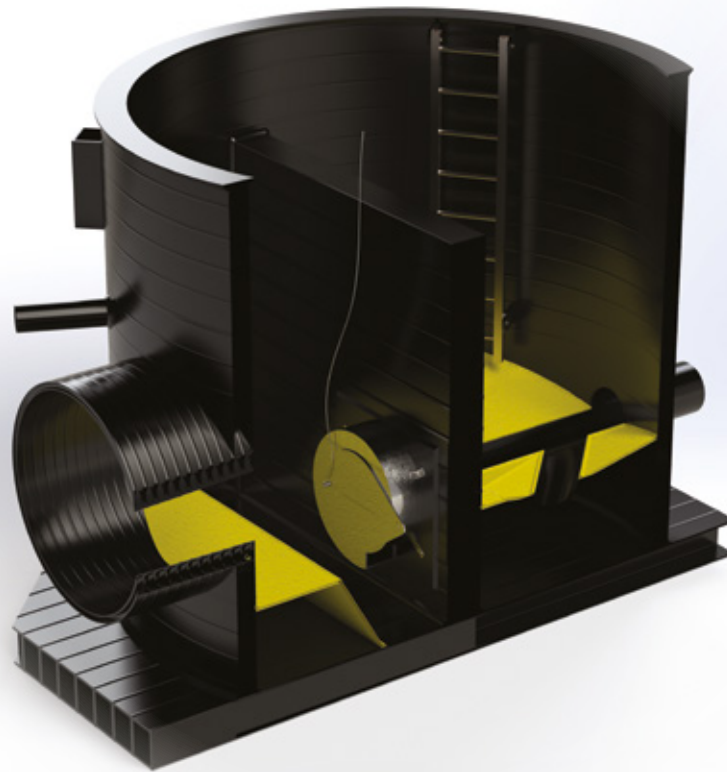
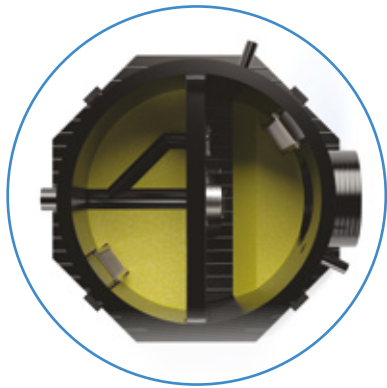


- Major savings on programme
- For use as storage, contact and inter-process pipework
- Available in sizes 400mm to 3500mm
- Bespoke designs and full structural design service
- Weholite pipes and panels, DWI Regulation 31 Reference number DWI 56.4.513 "Approved for use in public water supplies"
- WRAS Approval 1603507
- Lighter plant and less labour
- Best abrasion resistance
- Better flow properties
- Low maintenance



**WEHOLITE**



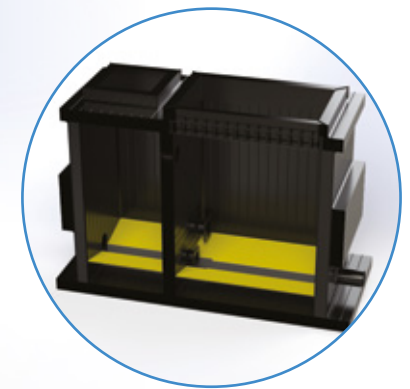
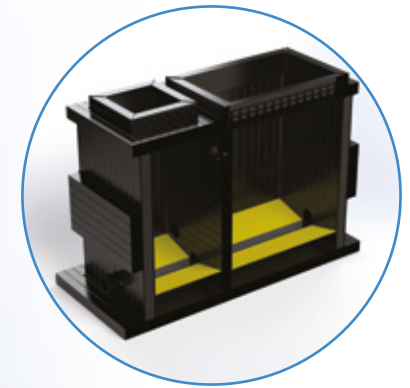
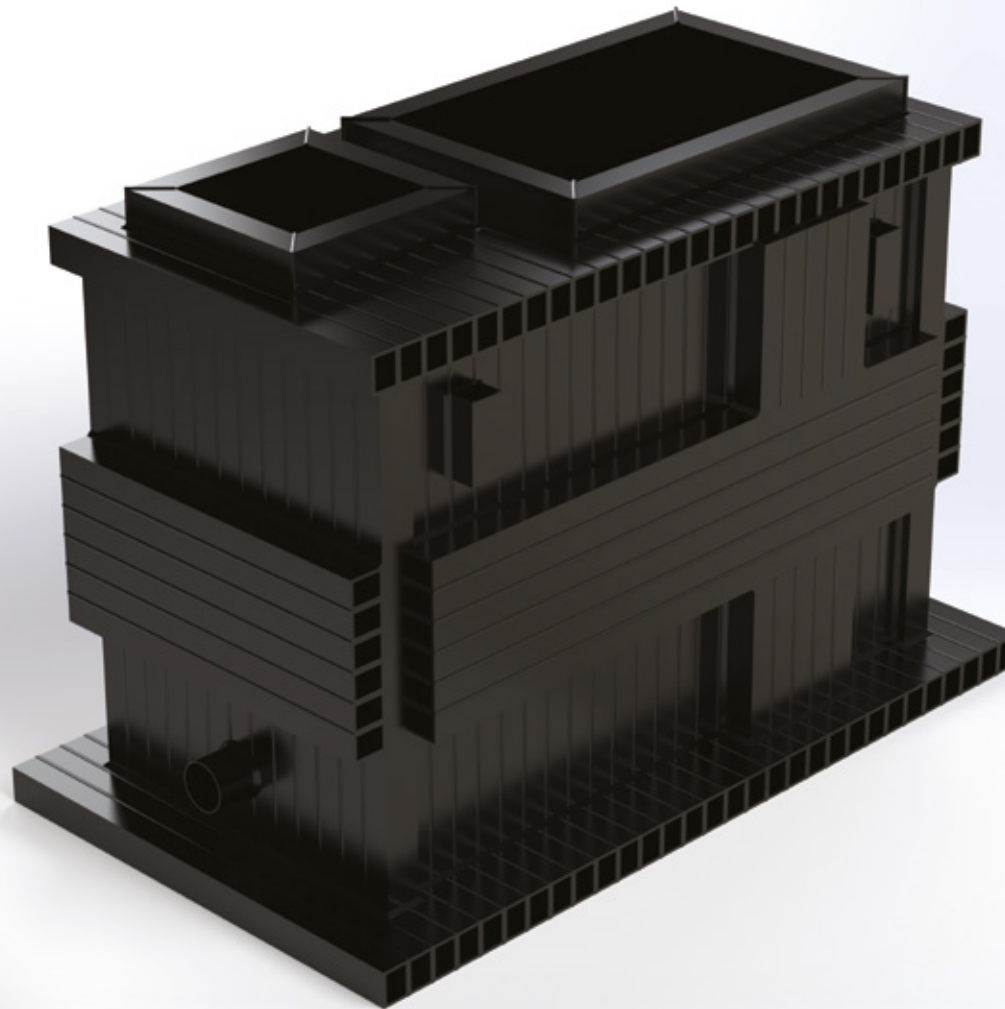
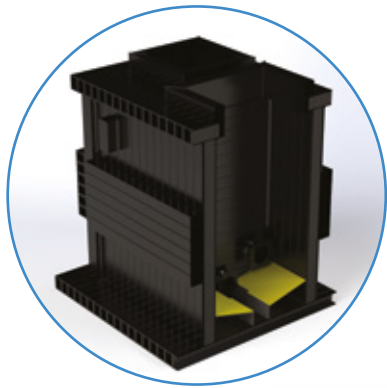


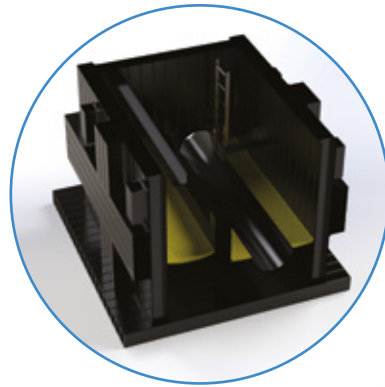
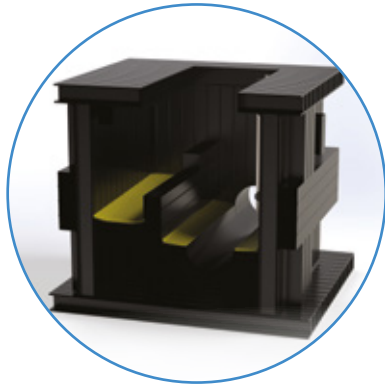
- Major savings on programme
- Available in sizes 900mm to 3500mm
- Designed to meet project specific requirements using standard components
- Fully tested, factory built components
- Full structural design package available
- Designed to resist groundwater pressures
- Concrete surround not required
- Rocker pipes not required
- Complete with lifting points
- Chambers ready to use immediately
- Totally resistant to Hydrogen Sulphide – H<sub>2</sub>S
- Lighter plant and less labour
- Yellow anti-slip benching
- Best abrasion resistance
- Better flow properties
- Low maintenance
- Designed in line with Sewers for Adoption and specific water company requirements for S104 adoption\*

\* All UK Water Companies have differing specifications and requirements. Please contact Asset International Limited for specific advice.



**WEHOLITE**





- Major savings on programme
- Designed to meet project specific requirements using standard components
- Fully tested, factory built components
- Full structural design package available
- Designed to resist groundwater pressures
- Concrete surround not required
- Designed to hold both mechanical and static screens
- Rocker pipes not required
- Ready to use immediately
- Totally resistant to Hydrogen Sulphide – H<sub>2</sub>S
- Lighter plant and less labour
- Best abrasion resistance
- Better flow properties
- Low maintenance



WEHOLITE

